

Advantages of OEM Oil Filters

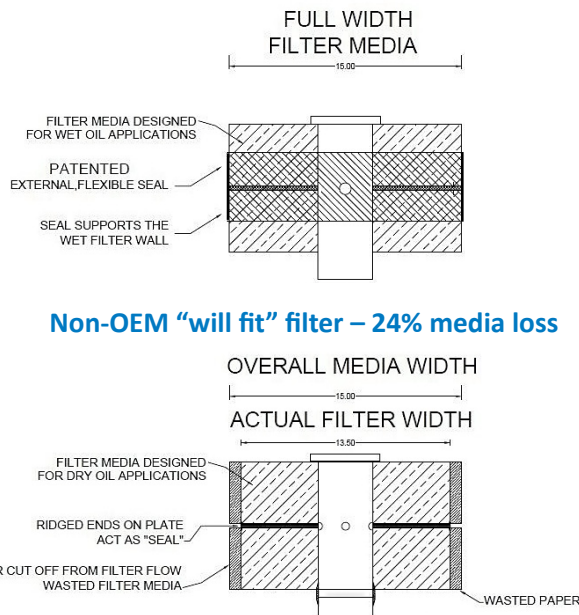
Copyright 2024 Stolle Machinery Company, LLC – All Rights Reserved

Technical Bulletin 2402-1 for Stolle Standun Bodymakers

Stolle Machinery would like to bring to light the difference between running OEM oil filter media and cheaper alternatives. What filter are you using to protect the oil in your bodymaker – the proven HTI 800-026 filter, or a look-alike filter that fits the canister?

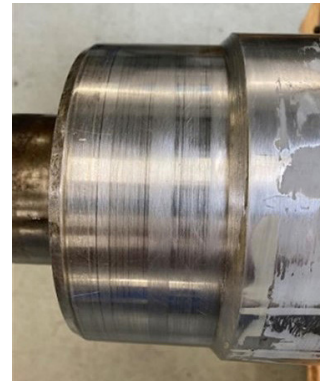
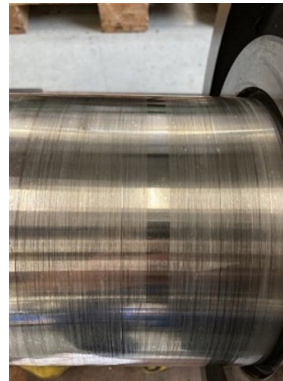
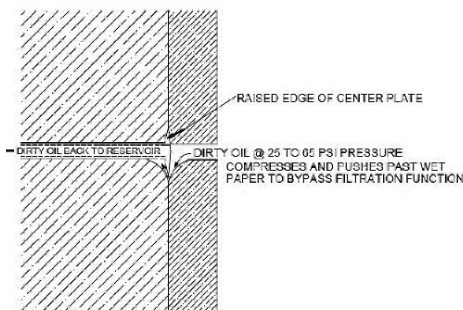
HTI filters are proven OEM filters that eliminate early failure and resulting bearing damage. HTI filters feature a patented sealing band design that seals and supports the filter to maintain the integrity needed for consistently clean oil in your body maker and cupping press. In addition, HTI filters are made with a proprietary formula paper that stays strong when saturated, which prevents oil bypass which means the filter continues to work at high pressures. The illustrations below show the filter media design discrepancy:

HTI Filter – 100% media use



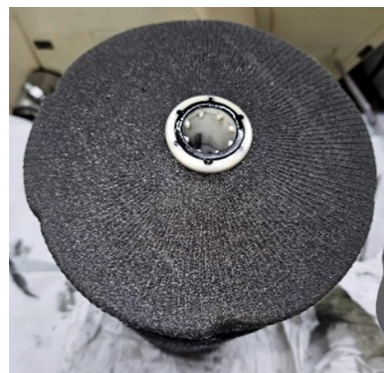
Non-OEM "will fit" filter – 24% media loss

Diagram of filter seal design that loses integrity when wet



Above and Left: Photos showing excessive wear in bearings caused by improperly filtered lube oil

Below: Low quality non-OEM filter canister and media



Contact Stolle today for a free trial of our proven filters. Get on the path to increased productivity and decreased down time today!



Stolle Machinery Company, LLC
6949 South Potomac Street, Centennial, CO 80112
Phone: +1 303-708-9044 Fax: +1 303-708-9045
www.stollemachinery.com

For more information or pricing, contact:
Zach Hart +1 303-708-5154
zach.hart@stollemachinery.com
Mark Leaf +1 303-708-5103
mark.leaf@stollemachinery.com.